



NEIGHBORHOOD NEWS

FISHER PARK NEIGHBORHOOD ASSOCIATION

SPRING 2025



Members of a jazz ensemble from Santa Ana High School jamming during the Fisher Park New Year's Potluck and General Meeting event.

FISHER PARK SPRINGS INTO 2025

Spring is springing here in Fisher Park and your Fisher Park Neighborhood Association Board has been busy planning events for 2025!

We rang in the new year with our New Year's Potluck and General Meeting, held in our Fisher Park cabin on Friday, January 10, and residents were treated to live jazz music performed by a jazz ensemble from Santa Ana High School including Mark Santos, director of bands, on trombone. The FPNA Board made a donation of \$1,000 to Santa Ana High School's instrumental music department as a thank you for forming a partnership with our neighborhood and sending talented young musicians to our events, including our annual Fourth of July Parade's awesome drumline.

In addition to being treated to delightful finger foods and appetizers, residents in attendance also partook in a drawing for a one-night getaway at the Westin Anaheim Resort which

included \$50 food and beverage credit at RISE Rooftop Lounge, a prize generously donated by an FPNA Board Member. Congratulations to our lucky winner!

The FPNA Board uses your yearly suggested neighborhood contributions partly to host events to bring neighbors together to enjoy where we live amidst the hustle and bustle of life. Please make sure to check the events calendar on the back of each edition of the Fisher Park Newsletter as well as on our website, fisherparkna.com, for a list of upcoming events, how to RSVP, and so on. On our website, you can also sign up for our mailing list to receive periodic emails about upcoming events and relevant happenings.

We look forward to seeing you! If you are interested in joining the FPNA Board to help with planning our events, please email board@fisherparkna.com to express interest.



IN THIS ISSUE:

2

2024 HOLIDAY
DECORATING
CONTEST WINNERS

2

OPEN GARDEN DAY,
WINTER YARD OF
THE SEASON

3

FLY QUARANTINE,
BILLBOARDS,
DUMPSTER DAYS

4

TRAFFIC
IMPROVEMENT
PLANS

5

FP HISTORY #9,
SPRING YARD OF
THE SEASON

7

SANTIAGO CREEK
UPDATE

2024 HOLIDAY DECORATING CONTEST WINNERS

Holiday cheer in Fisher Park has never shone brighter than during the holiday season of 2024, and the competition for our annual Holiday Decorating Contest was fierce. Congratulations to the winners, listed below! These winners will be ineligible in 2025's competition.

OVERALL SWEEPSTAKES CHAMPION:
1234 SHARON RD



EAST WINNER:
719 W JONQUIL RD



WEST WINNER:
1107 SHARON RD



OPEN GARDEN DAY RETURNS ON SATURDAY, MAY 10

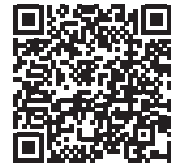
West Floral Park and Fisher Park's biggest event of the year, Open Garden Day, is back and better than ever! On Saturday, May 10, select gardens will be open 9:30AM–3:30PM for garden explorers and enthusiasts to tour, showcasing unique landscapes, innovative gardening techniques, and a variety of tranquil spaces intended to inspire and delight.

In addition to gardens, morning refreshments, a variety of lunch options, shopping across a diverse array of vendors, expert talks, live performances, the annual classic car show, and more will be available at The Promenade on Westwood. A convenient and complementary shuttle service is available to easily access the day's gardens from The Promenade.

Visit [OpenGardenDay.com](https://www.OpenGardenDay.com) to buy your tickets now (or scan the QR code to the right), for more information, to shop, or to sign up to volunteer!



BUY TICKETS NOW:



**\$20 each when purchased before
Friday, May 9 11:59PM (\$5 savings)**

Early Garden Explorer wristband pickup is
available at 915 W Riviera Dr 10AM–4PM on
Friday, May 9.

Day-of pickup and purchase will happen outside of
2302 N Westwood Ave. Cash strongly preferred.

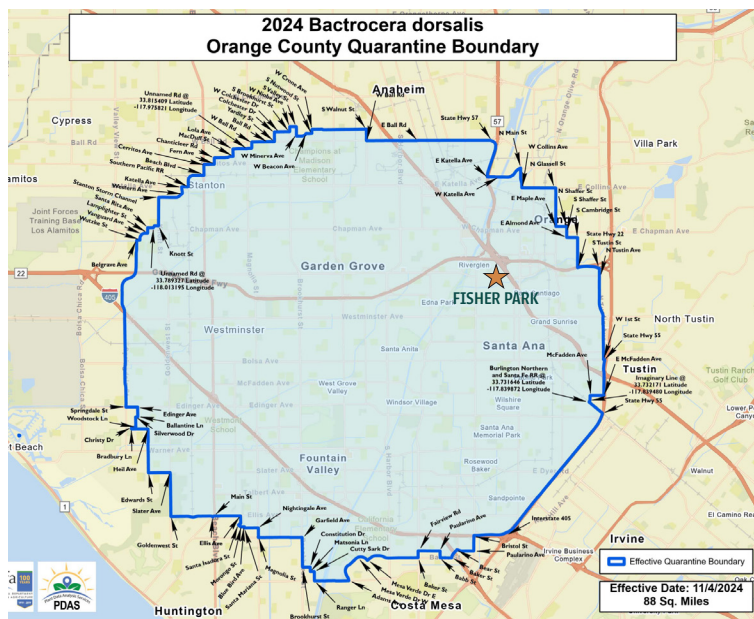
WINTER YARD OF THE SEASON: 1106 W RIVER LANE



Beautiful any time of the year thanks to drought-tolerant and desert landscaping, 1106 W River Lane was named our Winter 2025 Yard of the Season! A wonderful mix of greenery, drought-tolerant plants, Spanish-style architecture and decor, and outdoor living space make this yard a perennial paradise. Congratulations!

Every season, a new front yard will be featured in any area of Fisher Park to promote pride of ownership, creativity, and a commitment to keeping Fisher Park looking its best. Winners can proudly display the coveted Yard of the Season sign and be featured in our newsletter and social media. Note that this program is independent of Holiday Decorating Contests.

FRUIT FLY QUARANTINE POSSIBLY TO LIFT IN JUNE



A map showing an 88 square mile quarantine zone due to the Oriental fruit fly.

Unbeknownst to many Santa Ana residents, an 88 square mile swath of Orange County, including Garden Grove, Westminster, Fountain Valley, and Santa Ana including Fisher Park, has been under quarantine due to the invasive Oriental fruit fly, effective November 4, 2024. This particular fruit fly “hitchhikes” on produce illegally brought back by travelers or via packages of produce packed in infested areas. The Oriental fruit fly is known to target over 230 different fruit, vegetable, and plant commodities. Important California crops and backyard favorites at risk include pome and stone fruits, citrus, dates, avocados, and many vegetables, particularly tomatoes and peppers. Damage occurs when the female fruit fly lays eggs inside the fruit. The eggs hatch into maggots, which tunnel through the flesh of the fruit, making it unfit for consumption.

During this quarantine period, residents are asked to not move any homegrown fruits or vegetables from their property to prevent spreading larvae. The quarantine is set to lift in June 2025 provided no additional Oriental fruit flies are found. Note that this may be extended or the quarantine area expanded if more Oriental fruit flies are found.

Residents with questions about the eradication project may call CDFA's Pest Hotline at 1-800-491-1899. Additional information may be found at www.cdca.ca.gov/plant/fruitfly

MAIN PLACE DIGITAL BILLBOARD PUBLIC HEARING

Contributed by Kyle Kingston

A Public Hearing was held March 10, 2025 at City Hall regarding CONDITIONAL USE PERMIT NO. 2024-15 FOR THE PROPERTY LOCATED AT 2800 NORTH MAIN STREET. The applicant requested approval to allow for the conversion of two existing freeway oriented, on-premise digital signs to off-premise advertising digital signs (digital billboards) and to allow the digital billboards to continue to exceed the maximum height of 60 feet located at MainPlace Mall. Currently the signs heights are 81.83 feet facing I-5 and 71.83 feet facing SR-22. The primary change would be to the type of content displayed. Currently, the signs are limited to on-premise advertising, meaning they can only

promote businesses or activities located on the same property. The proposed conversion would allow off-premise advertising, enabling the display of regional or national advertisements unrelated to the site. As part of the conversion, all existing tenant identification signage (non-digital) would be removed from the structures, and “Santa Ana” signage would be prominently added to the support beam of each sign.

The existing digital displays are equipped with light-sensing devices designed to monitor brightness and ambient light conditions, automatically adjusting or dimming the brightness levels to ensure compliance with lighting regulations. The digital billboards

operate daily from 6:00 a.m. to midnight. The proposed Project will generate an annual operating fee payable to the City of \$100,000.00 in the first year, \$106,468.72 in the second year, and \$113,355.95 in the third year. Thereafter, the operating fee will continue to increase by approximately 6.46% annually for the duration of the 20-year operating agreement. This project primarily affects Morrison/Eldridge Park and Fisher Park Neighborhoods which are directly across from the site of I-5 billboard. You can read more about this including public comments at: <https://santa-ana.primegov.com/Portal/Meeting?meetingTemplateId=23149>

DUMPSTER DAY #1 THANK YOU + HAZARDOUS WASTE INFO



Fisher Park's first dumpster day of 2025 was held on Saturday, March 22. Thank you to the Martin and Wendell households for hosting! Our second Dumpster Day has already been

scheduled for Saturday, September 13. The FPNA will distribute a flyer in the weeks before to confirm dumpster locations and list what's allowed in. While hazardous waste is not allowed to be put into the dumpsters, the County of Orange offers free disposal for household hazardous waste at several locations close to Santa Ana. These collection centers are open Tuesday–Saturday from 9AM to 1PM. For more information, call 714-834-6752.

Hazardous Waste Collection Locations:

- Anaheim: 1071 N Blue Gum Street
- Irvine: 6411 Oak Canyon (next to City Yard)
- Huntington Beach: 17121 Nichols St, Gate 6

The City provides curbside used motor oil and filter collection at no charge. Contact Republic Services at 657-467-6220 to receive your free oil container and filter bag, and contact them again once utilized to schedule a pickup on

your next regularly scheduled trash collection day and a new empty container and oil filter bag will be left for your next oil change. DO NOT dump used motor oil into storm drains as they flow to the ocean.

**OUR NEXT DUMPSTER DAY IS
SATURDAY, SEPTEMBER 13
8AM–12PM**

**617 W Memory Lane
1117 W River Lane
505 W Park Lane**

FISHER PARK TRAFFIC IMPROVEMENT CONCEPT PLANS

A few years back the Fisher Park Neighborhood Association formed a Traffic Committee to address various concerns about traffic in our neighborhood. We made some progress getting the City of Santa Ana to consider and address some of our ideas, but as with most traffic issues, changes that reduce problems for some neighbors can make other neighbors' problems worse.

One issue we discussed was the volume and especially the speed of traffic passing through Fisher Park along Flower Street. The City is continuing with their work to reduce and slow down commuter traffic cutting through Morrison Park, Fisher Park, Floral Park and West Floral Park, but those efforts will be discussed at a later date.

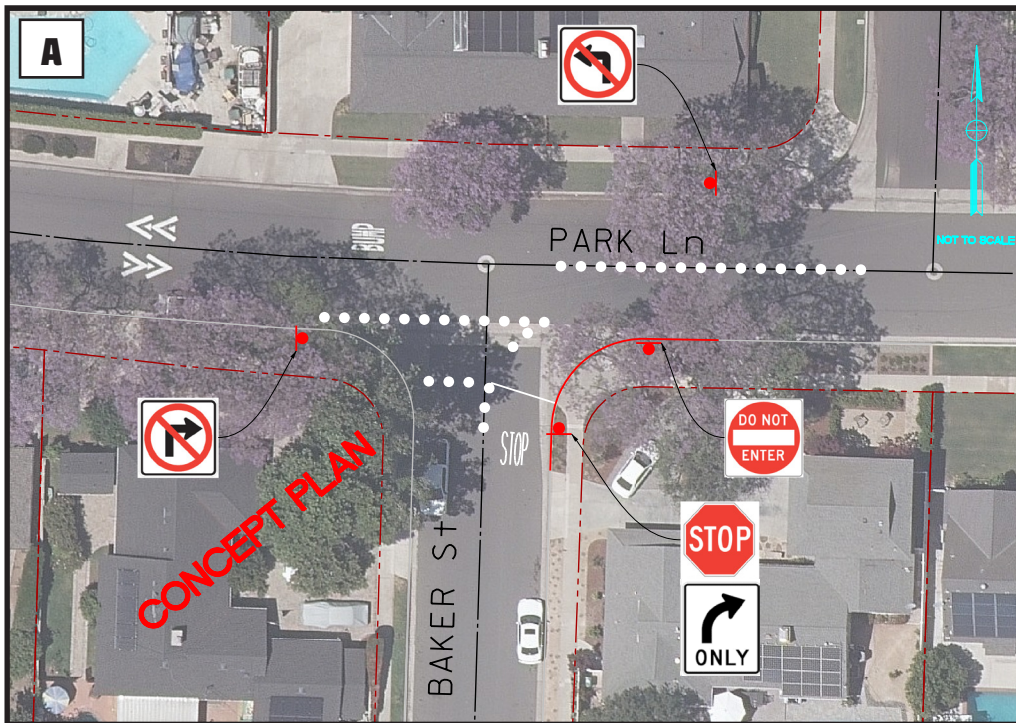
Another traffic issue the Traffic Committee discussed was morning commuter traffic avoiding the No Right Turn sign (weekdays from 6am to 9am) at the intersection of Memory Lane and Flower Street, and instead cutting through the neighborhood by going south on Baker Street, and then east on Sharon Road. This problem was and is especially bad on Sharon Road because morning commuters tend to speed on their way to work or to drop kids off at school. Huge safety issue for pedestrians walking along the street and also for neighbors trying to back out of their driveways.

Morrison Park also has similar morning traffic issues with drivers avoiding the same No Right Turn sign, racing through streets (even over speed bumps) and eventually going south on Baker Street and into Fisher Park. There is also the additional safety issue of students walking south towards school along Baker Street on weekday mornings, and sometimes having speeding commuters also going south coming from behind them.

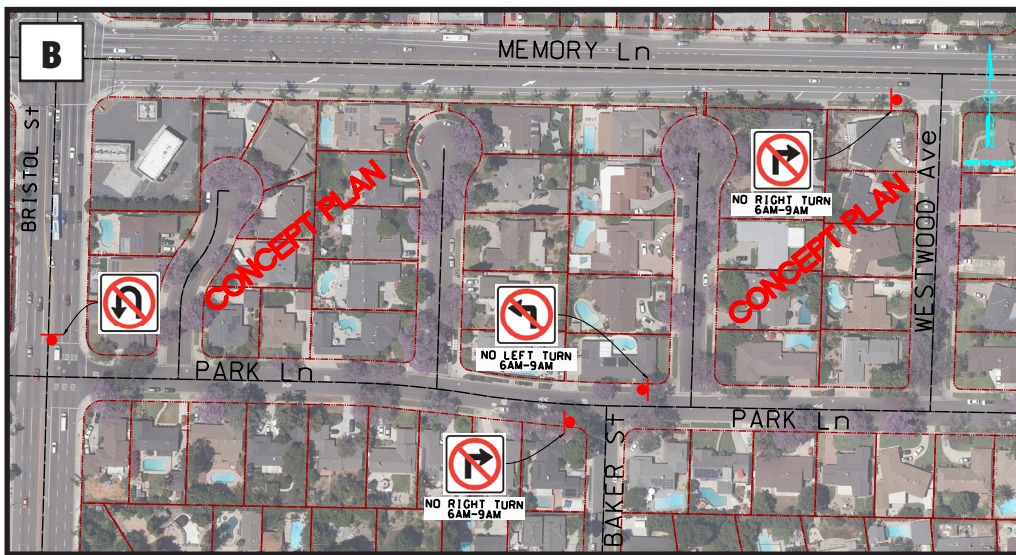
Public Works has presented us with two alternatives for resident input. Both alternatives should make Sharon Road and Baker Street much safer on weekday mornings, but not completely solve the problem because motorists don't always follow the rules. There would still need to be periodic traffic enforcement to help reinforce compliance efforts.

However, both alternatives would also cause additional inconvenience to some neighbors and anyone else who need to enter Fisher Park on weekday mornings from Baker Street. But, please note that morning commuter traffic along Sharon Road continues to be extremely dangerous, and balance any inconvenience these alternatives might cause you with making life safer for some of your neighbors.

Prior to Santa Ana Public Works moving forward with either Alternative Concept A or B, or with another concept, they plan to first present and discuss plans with the entire neighborhood.



ALTERNATIVE A: This alternative would completely prohibit and prevent traffic from entering Fisher Park from Baker Street. Drivers would be able to exit Fisher Park going north on Baker, but never enter going south.



ALTERNATIVE B: This alternative would prohibit entering Fisher Park from Baker Street only on weekdays from 6am to 9 am, matching the prohibition times of the No Right Turn sign at Memory and Flower.

Note: Alternative B also includes an additional item that's a separate safety issue and not directly related or dependent on whatever we might do to address morning commuter traffic. Several residents have noted a safety issue on Bristol Street when commuters going south make U Turns instead of turning east on Park Lane. There have been several traffic accidents at that intersection and multiple near misses. Public Works is considering installing a No U Turn sign at that intersection, so please also submit your concerns and comments about a No U Turn sign.

WE NEED YOUR INPUT!

Please scan the QR code here or visit fisherparkna.com/traffic to take a brief survey related to these two plans and offer input, comments, and suggestions. Your participation is appreciated and is vital to the success of this project!



FISHER PARK NEIGHBORHOOD HISTORY: PART 9

RESEARCHED AND WRITTEN BY ERICA MOIR

The boom of the 1920's saw the development of many homes in the Floral Park area. At this time Fisher Park was not yet established and was still farmland owned by the McFadden family. In 1920 there were only nine homes on Flower St. north of Seventeenth. Between 1925 and 1930 three more homes were built in the 2600 block. This is the story of one of them.

In 1928 a young police officer, Mr. Cornish Roehm built the custom English Revival home that sits at 2612 North Flower as a wedding present for his wife Alice. The homes distinguishing features of the architectural period are its multi-gabled roof with the larger north end having a clipped gable, the entry surround and arch motif of cherubs (still intact). Stucco cladding, groupings of casement windows and small details like the tall thin louver vents at the gabled ends. These details are also included in the front gabled garage built on the property at the same time.

Mr. Cornish J. Roehm was born in Ohio in 1899 and worked at his fathers Tobacco shop. In 1917 he enlisted as a soldier at the age of 18, during the last year of World War 1. He completed his military service in 1919. The Roehm family (Cornish, his siblings and parents) is listed as having moved to Santa Ana in 1921 and setting up the Roehm Sylvester Co. that sold wholesale cigars, tobacco and soda at 308 Spurgeon St. Cornish again worked for his father, this time as a driver for the family business. He was also very involved in the community of Santa Ana and was a member of the Cantando Club. This group of male singers began in 1926 and performed with a music director and a piano accompanist for many years both here in Santa Ana as well as across Southern California.

After marrying and moving into their custom home in 1928, Cornish and his new wife Alice raised their four children here; Harold, Robert, Margorie and Elon. The large property also allowed the family the space to operate the Santa Ana Collie Kennels on the property. By 1934, Cornish had gone from being a police officer to the role of County Constable. In 1947, after over 20 years in law enforcement, Cornish became the proprietor of the Orange Billiard Parlor in the city of Orange and in 1954 having a sport fishing business at Seaport Landing in Newport. Cornish died in 1964 at the age 65, but the family would live in the home until it's sale in 1997. This home is listed on the Santa Ana Historic Registry.



Santa Ana Cantando Club photograph taken in May 1927.



2612 N Flower St as photographed in present times.

SPRING YARD OF THE SEASON: 714 W JONQUIL RD



Our Spring 2025 Yard of the Season is another yard that shines year-round: 714 W Jonquil Rd! With its meticulously-maintained landscaping, perfectly manicured palm trees, and ever-blooming birds of paradise, you'd swear you were arriving at a tropical resort as you turn the corner from Acacia Place onto Jonquil Road. Congratulations, and thank you for keeping Fisher Park beautiful!

As mentioned, every season, a new front yard will be featured in any area of Fisher Park to promote pride of ownership, creativity, and a commitment to keeping Fisher Park looking its best. Winners can proudly display the coveted Yard of the Season sign and be featured in our newsletter and social media. Note that this program is independent of Holiday Decorating Contests.

SANTIAGO CREEK UPDATE



Major milestone, but not much drama. The Water Resources Development Act of 2024 (WRDA) that includes language protecting the trees, wildlife and natural habitat along Santiago Creek from the I-5 Freeway to the Santa Ana River finally became law after it was signed by President Biden on January 6, 2025. By the time our last Newsletter went out, the Santiago Creek protective language had already made it into the House version of the WRDA (assisted by Congressman Correa) and the Senate version (assisted by California Senators Alex Padilla and Laphonza Butler.)

The real drama still unfolding is whether or not the US Army Corps of Engineers (USACE) will follow the law, and when. Congressman Lou Correa and Congresswoman Young Kim just released a joint letter to the USACE urging them to immediately move forward with funding and implementing their work on the Creek. WRDA allocated funding and refined USACE projects all over the country, and its provisions are legally binding on the USACE. But WRDA also has requirements that require the USACE to coordinate with state and local water managers whenever they release water from a reservoir. A few weeks ago when the USACE released water from 2 Central California reservoirs, that didn't happen.



Congress of the United States
House of Representatives
Washington, DC 20515

March 31, 2025

The Honorable Lieutenant General William H. Graham, Jr.
Commanding General and Chief of Engineers
U.S. Army Corp of Engineers
441 G. Street, N.W.
Washington, DC 20314

Dear Lieutenant General Graham:

As Members of Congress representing the Santa Ana River Mainstem Project (SARMP), we thank you and the U.S. Army Corps of Engineers (Corps) for your continuing commitment to the critical work on the SARMP, including the Santiago Creek (Creek) component.

We are writing to urge you to expeditiously proceed with the Creek component of the SARMP, which was originally authorized as a flood-risk management project in the Water Resources Development Act (WRDA) of 1996 and is funded by the Balanced Budget Act of 2018 (BBA '18). The Creek component includes the Smith Basin, the Blue Diamond Pit, and the Bond Pit (the Basins) and the Santiago Creek Channel (Channel), the portion of the Creek that runs from the I-5 Freeway to the confluence of the Santa Ana River. It is time to **immediately issue implementation guidance** for both elements of the Creek component so the Corps can finalize the design for the Basins and develop a new plan for the Channel.

Section 1311 of WRDA '24 modifies the language for the Creek component making clear that the Corps should move forward with the project subject to two modifications.¹ Specifically,

¹ Section 1311 of the WRDA '24 reads:

(a) SANTA ANA CREEK, INCLUDING SANTIAGO CREEK

(1) MODIFICATION.—The project for flood control, Santa Ana River Mainstem Project, including Santiago Creek, California, authorized by section 401(a) of the Water Resources Development Act of 1986 (100 Stat. 4113; 101 Stat. 1329–111; 10421 Stat. 4611; 110 Stat. 3713; 121 Stat. 1115), is modified to require the Secretary to treat construction of the Santiago Creek Channel as a separable element of the project.

(2) PROHIBITION.—The Secretary may not construct the Santiago Creek Channel unless such construction minimizes the impacts to existing trees in, or adjacent to, the Santiago Creek Channel.

(3) RULE OF CONSTRUCTION.—Nothing in this subsection shall affect the authorization for other portions of the project described in paragraph (1).⁷

the language **mandates that the Corps develop a new plan for the Channel that “minimizes the impacts to existing trees in or adjacent to the channel” before proceeding with construction and treat the Channel project as separable element from the Basins.** Congress' intent is unambiguous -- the Corps must proceed with the Basins' work **independently** from the Channel while drafting a new design for the Channel that is consistent with the language and spirit of WRDA '24.

As noted by the Corps, and well known to the impacted community, the work on the Creek is essential for flood control purposes. As the Corps' Draft Supplemental Environmental Assessment/Initial Study and Mitigated Negative Declaration (Draft SEA) makes plain:

[T]he need for the project is due to significant flooding along the Santa Ana River -- including Santiago Creek...which has been documented since at least 1897...Unprotected banks along Santiago Creek are subject to erosion which could cause damage to residential and commercial developments along the creek.²

The sandy, gravelly slopes of the Basins are highly susceptible to erosion during storm events. Slope failures could undermine flood control infrastructure, reduce stormwater capture and groundwater recharge, and encroach on adjacent properties. “The existing slopes of the Santiago Recharge Basins require repair to accommodate the 1% AEP water surface elevation. Several locations have been identified along the basins which would require stabilization.”³ Neglecting to move forward with the project expeditiously leaves the community vulnerable and could lead to catastrophic impacts on the community, as noted in the Draft SEA.

Existing conditions at the project site could potentially exacerbate flooding risk in the project vicinity. In the event of a 100-year flood event, the lower portion of the Santiago Creek that feeds into the Santa Ana River mainstem has a potential to overflow and flood portions of the surrounding community. In the event of high flow rates along the project site, existing eroded conditions along the Santiago Creek channel may result in slope failure that could damage adjacent properties and homes.⁴

The current plan for the Creek, which was selected several decades ago, does not reflect current climate conditions or the needs of the community. The plan would drastically and permanently disrupt the area which has thousands of trees in, and adjacent to, the Channel on

(4) DEFINITIONS.—In this subsection:

(A) SANTIAGO CREEK CHANNEL.—The term “Santiago Creek Channel” means the portion of the project for flood control, Santa Ana River Mainstem Project, including Santiago Creek, California, authorized by section 401(a) of the Water Resources Development Act of 1986 (100 Stat. 4113; 101 Stat. 1329–111; 104 Stat. 4611; 110 Stat. 3713; 121 Stat. 1115), consisting of Santiago Creek downstream of the I-5 Interstate Highway to the confluence with the Santa Ana River.

(B) SEPARABLE ELEMENT.—The term “separable element” has the meaning given such term in section 103 of the Water Resources Development Act of 1986 (33 U.S.C.23 2213).

² “Santa Ana River Mainstem Santiago Creek, Orange County, California. Draft Supplemental Environmental Assessment/Initial Study and Mitigated Negative Declaration.” US Army Corps of Engineers, Chicago District. September 2023, page 3.

³ Ibid, 8.

⁴ Ibid, 28.


both public and private lands. The trees not only serve as habitat for countless birds, including Bald Eagles, and other wildlife and they form an indispensable noise barrier against the vehicle traffic from the Freeway. Further, given the lack of green space in the surrounding community, the wooded landscape provides an important outdoor space for these neighborhoods. **That is why it is essential to collaborate with the local sponsor, Orange County Public Works, to develop a new plan for the Channel now while BBA '18 funds remain available.**

In drought-stricken Southern California, where water capture and storage measures are being aggressively pursued, the current proposal for the Channel redirects this much needed water to the Pacific Ocean via the Santa Ana River. However, some of this damage can be mitigated by work at the Basins which play a vital role in groundwater recharge and flood risk reduction, storing over 13,000 acre-feet of stormwater and augmenting water supply for the community. Retaining additional water in the Basins is critical and the project “involves modifications to the Santiago Recharge Basins to allow for greater holding capacity during storm events.”⁵ **The Basins' work is an appropriate and essential use of BBA'18 funds and the Corps can move forward with the work at the Basins immediately.**

We emphatically urge you to allocate funds immediately to allow the Corps to move forward with the Creek component of SARMP. We look forward to working with you on the implementation of the Creek component, which is essential to protecting our constituents.

If you have any questions, please reach out to Congressman Correa's office at (202) 225-2965 and Congresswoman Kim's office at (202) 225-4111.

Sincerely


J. Luis Correa
Member of Congress


Young Kim
Member of Congress

⁵ Ibid, 22.

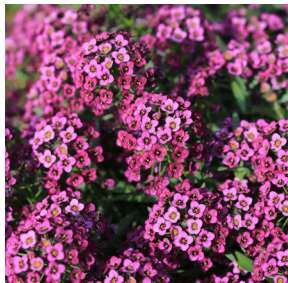
10 COMPANION PLANTS FOR HEALTHY VEGETABLES

Here in Fisher Park, our Zone 10b garden climate zone and mild temperatures year-round make growing veggies a productive, easy (comparatively speaking), and rewarding pastime. However, our lack of an annual freeze means that our plants and soil are susceptible to a variety of pests that can end your growing season prematurely and test your patience in other ways. Below are a variety of plants to plant alongside your vegetables that not only encourage pollination, but can repel pests and unwanted visitors and improve the balance and biodiversity in your garden.

Many of the plants listed below come in a number of varieties that can vary greatly in size and prolificness. Make sure to pay attention to width, height, light requirements, and water requirements to make sure they won't overtake the vegetables and other plants!



Marigolds



Sweet Alyssum



Sunflowers



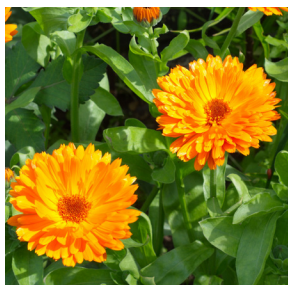
Cosmos



Nasturtiums



Zinnias



Calendula



Borage



Lavender



Basil

SANTA ANA COLLEGE PERFORMING ARTS SPRING SCHEDULE

Quality and affordable entertainment is only a stone's throw from Fisher Park as one of California's top Community Colleges is about a mile and a half from any point in the neighborhood. Several members of our community play in the instrumental ensembles, sing in the choir, and act on the stage of Santa Ana College and, with modestly-priced tickets, the school offers the chance to enjoy the performing arts and support our community without breaking the bank. Below is the schedule of performances for the Spring 2025 ensembles with ticket prices noted.

DANCE

Dance Works

Thursday–Saturday, 5/8, 5/9, 5/10 • 7PM
\$10 General, \$5 Students/Seniors/Military

MUSIC

Big Band Jazz Concert

Friday, 5/16 • 7:30PM
\$10 General, \$5 Students/Seniors/Military

Orchestra Concert

Saturday, 5/17 • 2:00PM
\$10 General, \$5 Students/Seniors/Military

Guitar Ensemble Concert

Saturday, 5/17 • 7:30PM
\$10 General, \$5 Students/Seniors/Military

Concert Band Concert

Sunday, 5/18 • 2:30PM
\$10 General, \$5 Students/Seniors/Military

Student/Faculty Piano Concert

Friday, 5/23 • 5:00PM
Free Admission

Choir Concert

Saturday, 5/24 • 7:30PM
\$10 General, \$5 Students/Seniors/Military

Don Mariachi Concert

Sunday, 5/25 • 2:00PM
\$10 General, \$5 Students/Seniors/Military

THEATRE

Assassins

Friday, 6/6 • 7:30PM
Saturday, 6/7 • 2PM, 7:30PM
Sunday, 6/8 • 2PM
\$17 General
\$12 Students/Seniors/Military

Santa Ana College Phillips Hall Theatre
1530 W 17th Street
Santa Ana, CA 92706

UPCOMING EVENTS

FOLLOW @JACKFISHERPARK ON INSTAGRAM AND FACEBOOK.COM/GROUPS/JFPNA FOR UPDATES!

GENERAL MEETING

WEDNESDAY
4/16



Join us for our next Fisher Park General Meeting on Wednesday, April 16 at **6:30PM in the Fisher Park cabin** for neighborhood and city updates, including a city official-led discussion about the parking situation and concerns in Santa Ana neighborhoods and streets.

OPEN GARDEN DAY

SATURDAY
5/10



Open Garden Day will be held in West Floral Park and Fisher Park on Saturday, May 10! Tour unique gardens in West Floral Park and Fisher Park and enjoy vendors, food, live performances, classic cars, and garden talks.

Please visit www.opengardenday.com to purchase tickets, learn more, or to sign up to volunteer!

Early bird Garden Explorer Wristbands are only \$20 (\$5 off) up to 11:59PM on Friday, May 9.

PANCAKES ON THE LANE

SATURDAY
6/14



Enjoy the company of your neighbors and mini pancakes with all the toppings under the trees of **1151 W River Lane** from **9:30–11:30AM** on Saturday, June 14! The price is **\$5** per person– please RSVP below!

RSVP REQUIRED!
PLEASE SCAN HERE:



4TH OF JULY PARADE

FRIDAY
7/4



Get ready to march in honor of our country's independence at our beloved annual Fourth of July Parade! Meet at the **Sharon Rd/River Ln intersection at 11AM** for swag, cold treats, patriotic outfit/vehicle judging, and our march around the loop with an OCFA fire truck and Santa Ana High School drumline!

FISHER PARK NEIGHBORHOOD ASSOCIATION BOARD

PRESIDENT
Randy Musser

SECRETARY
Jeff Carlisle

MEMBERS AT LARGE
Tessie Rios
Elaine Sarkin

PUBLIC RELATIONS
Les Hall

VICE PRESIDENT
Paul Sanford

TREASURER
Salomeh Kingston

COMMUNICATIONS
Alex Fitch

QUESTIONS, COMMENTS, AND SUGGESTIONS FOR THE BOARD SHOULD BE DIRECTED TO BOARD@FISHERPARKNA.COM.

FPNA CONTRIBUTIONS

A suggested contribution of \$35 per household per year allows us to hold events and support our community. Scan here with Zelle to contribute now!

